

# 调速减速电机 SPEED CONTROL GEAR MOTOR

## 25W 80mm

# STEPPERONLINE®



### 电机型号/性能 List of motor characteristics

电机型号 Motor Model	输出功率 Output Power	电压 Voltage	频率 Frequenc	电流 Current	转速范围 Speed Range	额定转矩 Rated Torque		启动转矩 Starting Torque	运行电容 Capacitor
齿轮轴型 Pinion Shaft	圆轴型 Round Shaft	W	V	Hz	r/min	90r/min	1200r/min	mN.m	μF/VAC
4IK25RGN-C	4IK25RA-C	25	1ph220	50	90~1350	70	190	80	1.8/450
				60	90~1550	60	153	75	
4IK25RGN-A	4IK25RA-A	25	1ph110	50	90~1350	70	190	80	7.0/250
				60	90~1550	60	153	75	

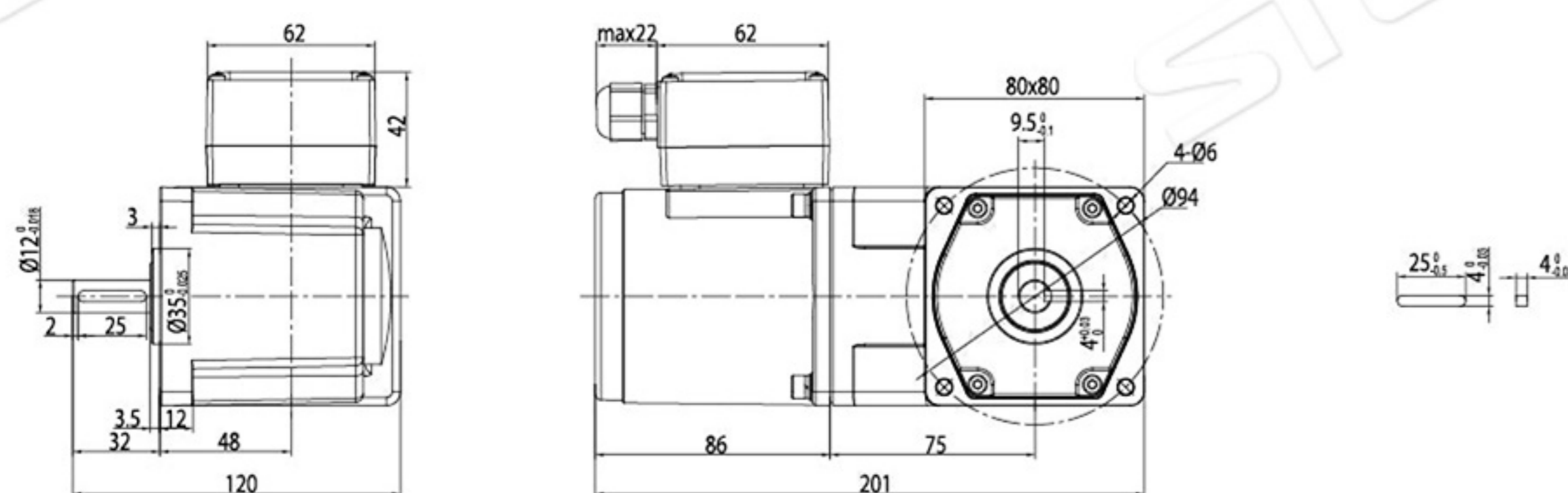
### 外形尺寸 (单位mm) Dimension (unit mm)

#### 感应、阻尼尺寸图 INDUCTION、REVERSIBLE TYPE DRAWING

● 弧锥齿实心轴 4IK25GN-CT/4GN □ RT

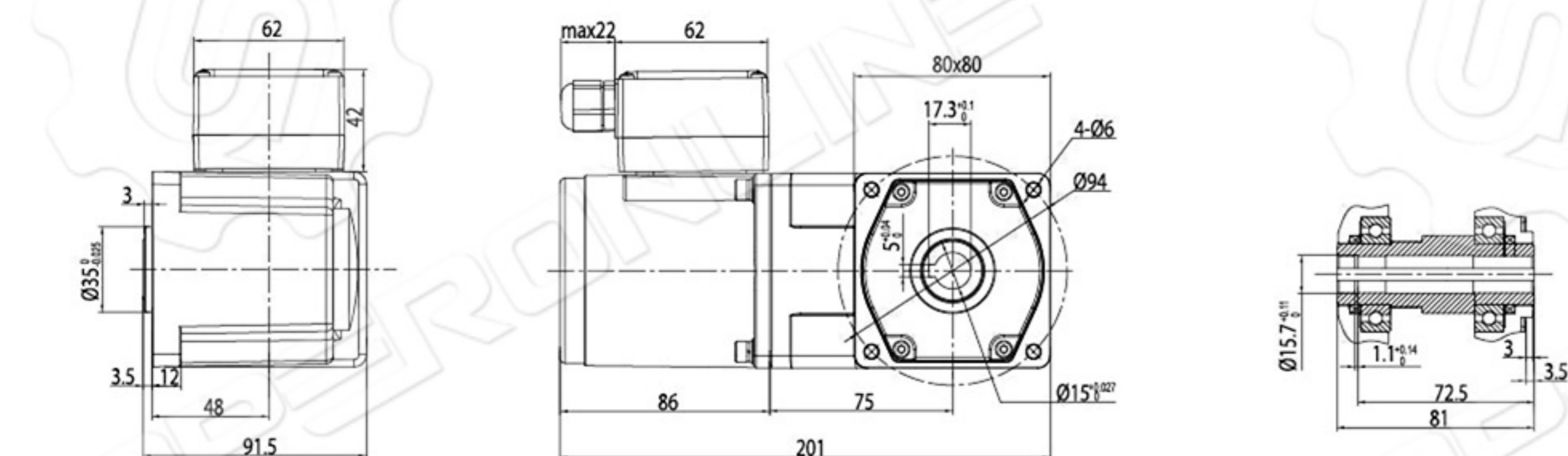
重量 Weight: 3.7kg

● 键 (减速器附件)



● 弧锥齿空心轴 4IK25GN-CT/4GN □ RC

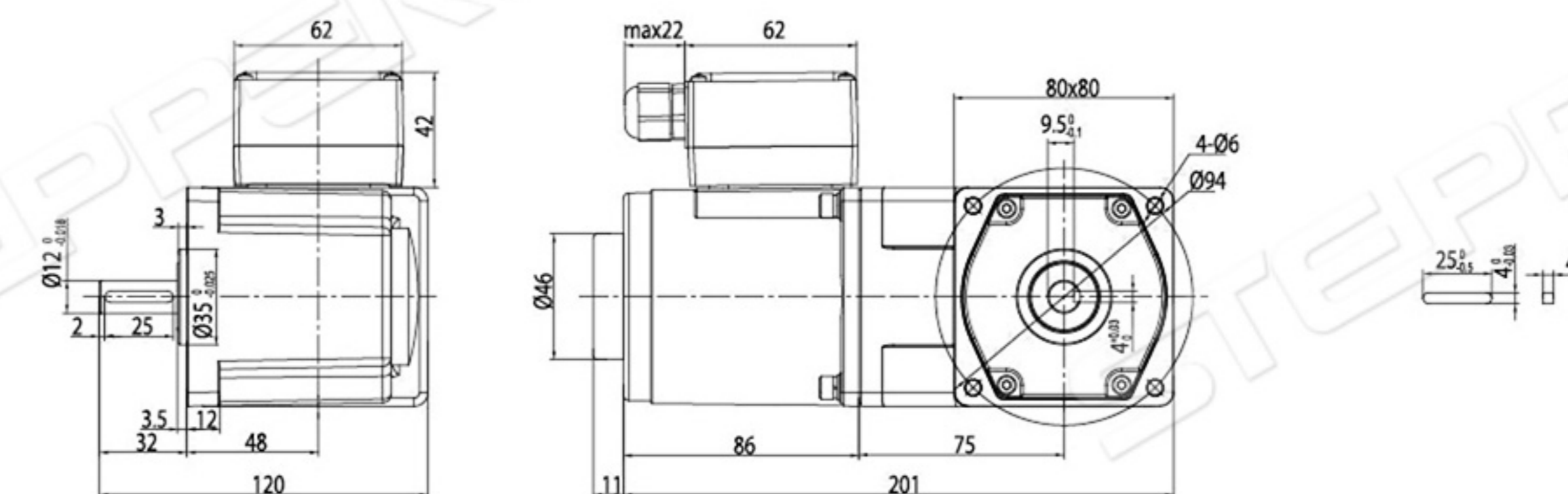
重量 Weight: 3.6kg



#### 调速尺寸图 SPEED CONTROL TYPE DRAWING

● 弧锥齿实心轴 4IK25RGN-CT/4GN □ RT

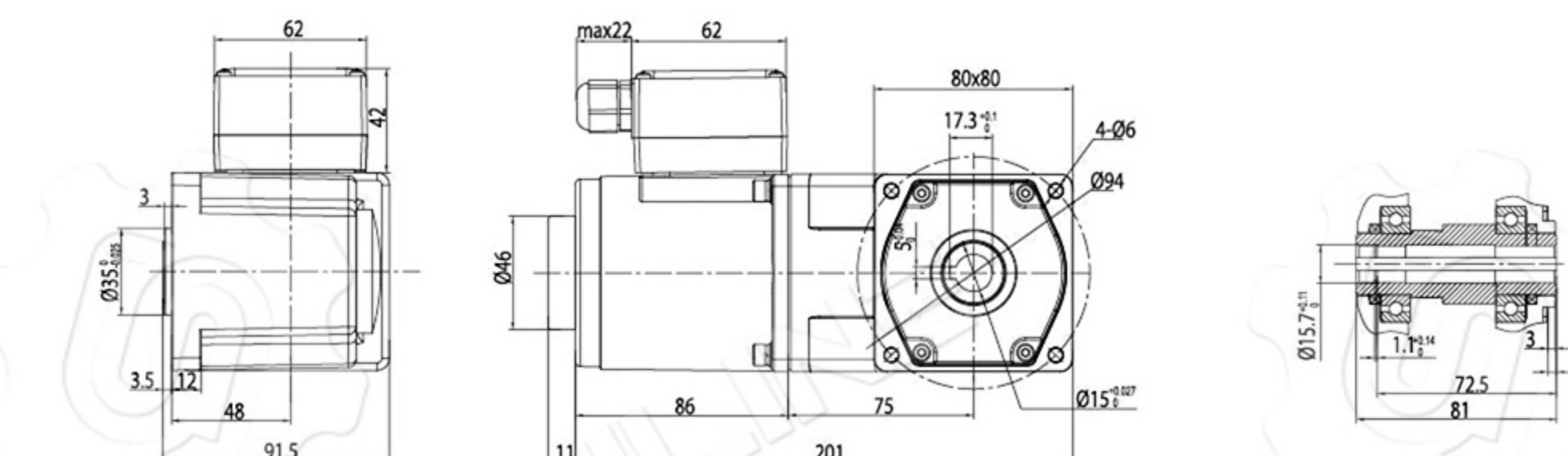
重量 Weight: 3.8kg



● 键 (减速器附件)

● 弧锥齿空心轴 4IK25RGN-CT/4GN □ RC

重量 Weight: 3.7kg



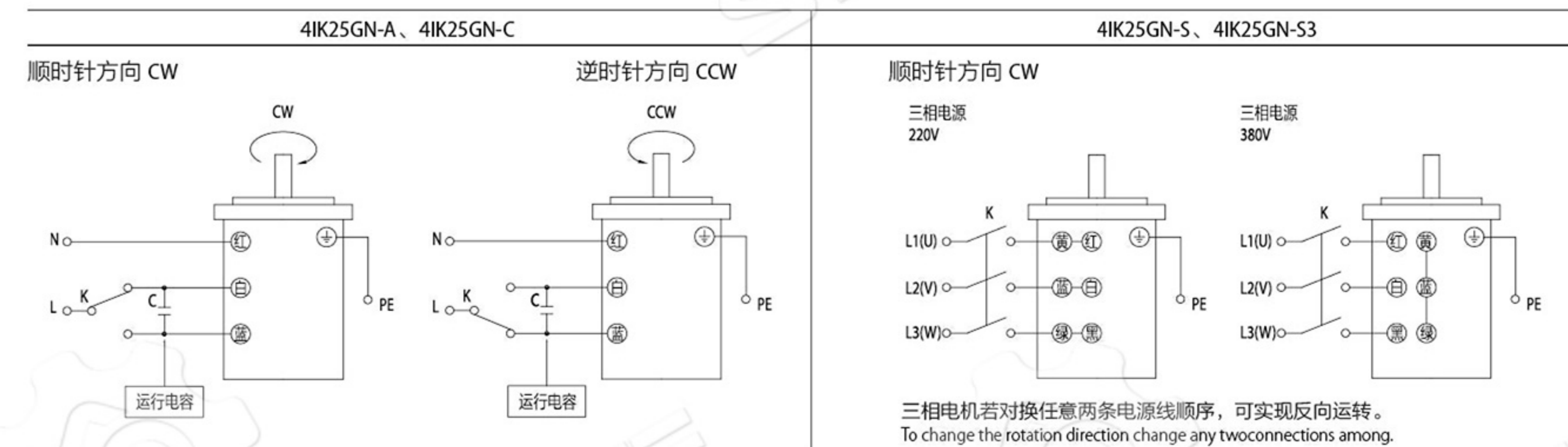
#### 接线图 Wiring Diagram

● 运转方向指从电机轴看来的方向。CW 表示顺时针方向，CCW 表示逆时针方向。

● 表中所记型号为齿轮轴型，圆轴型亦同。

● The direction of motor rotation is as viewed from the shaft end of motoc CW represents the clockwise direction, while CCW represents the counterclockwise direction.

● Name indicated in the list is pinion shaft we, also valid for the equivalent round shaft type.



#### 请注意 Note

单相电机运转方向的转换应在电机停止后进行。

若在电机运转时转换运转方向，可能发生无法转换运转方向或须费时较久的情况。

Change the direction of single-phase motor rotation only after bring the motor to a stop.

If an attempt is made to change the direction of rotation while the motor is rotating, motor may ignore reversing command or change its direction of rotation after some delay.