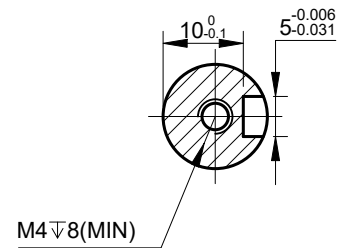
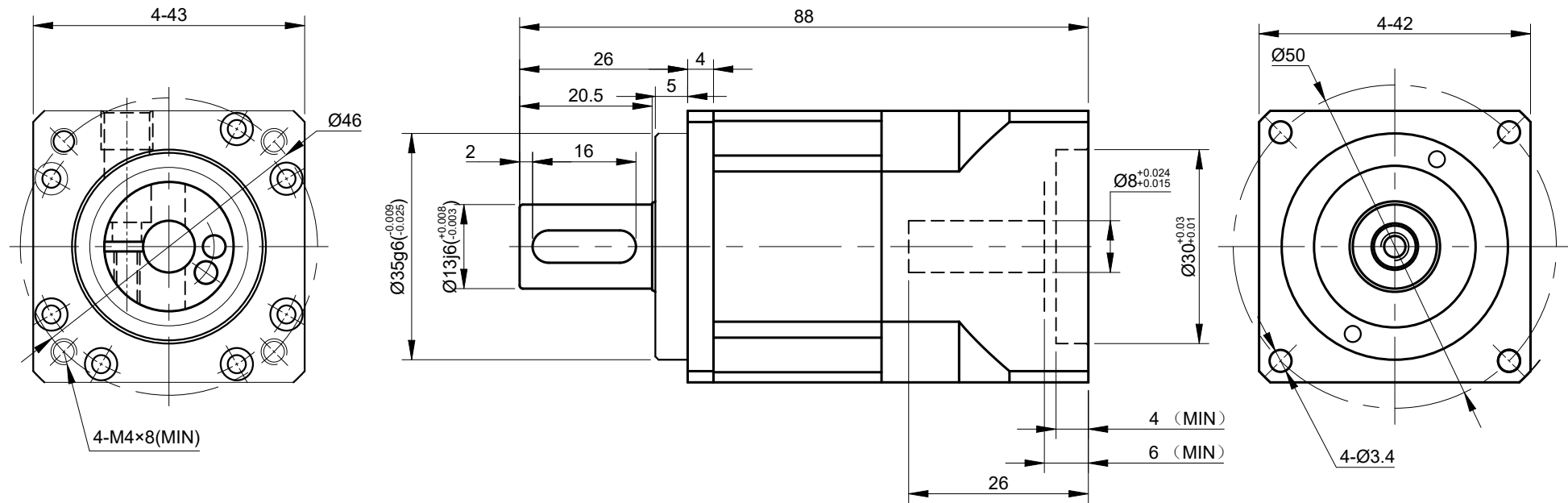


REV.	REVISION RECORD	BY	DATE
0	ORIGIN	LJ	1.19.2026



SPECIFICATION	CONNECTION	VALUE
GEAR RATIO		10
EFFICIENCY		95%
BACKLASH@NO-LOAD(arcmin)		5
MAX.PERMISSIBLE TORQUE(Nm)[lb-in]		6.00[53.10]
MOMENT PERMISSIBLE TORQUE(Nm)[lb-in]		30.00[265.52]
SHAFT MAXIMUM AXIAL LOAD(N)		640
SHAFT MAXIMUM RADIAL LOAD(N)		710
GEARBOX MATCHING MOTOR'S INPUT SHAFT LENGTH (mm)		26MAX
RATED INPUT SPEED(RPM)		4000
MAX. INPUT SPEED(RPM)		8000
WEIGHT(KG)		0.60
WATERPROOF RATING		IP65
LIFE(h)		20000
WORKING TEMPERATURE		-10°C~+90°C[14°F~194°F]

DIMENSIONS ARE IN MILLIMETERS.
TOLERANCES AS BELOW:
DECIMALS ANGLES
X ±0.5 ±2°
X.X ±0.25
X.XX ±0.13

THIRD ANGLE PROJECTION		
SIGNATURE		DATE
DRN	LJ	1.19.2026
APVD	MYX	1.19.2026

STEPPERONLINE®

GEARBOX

AB42-G10-D8

REV.	1	SCALE	1:1	DWG NO.	A3433
------	---	-------	-----	---------	-------