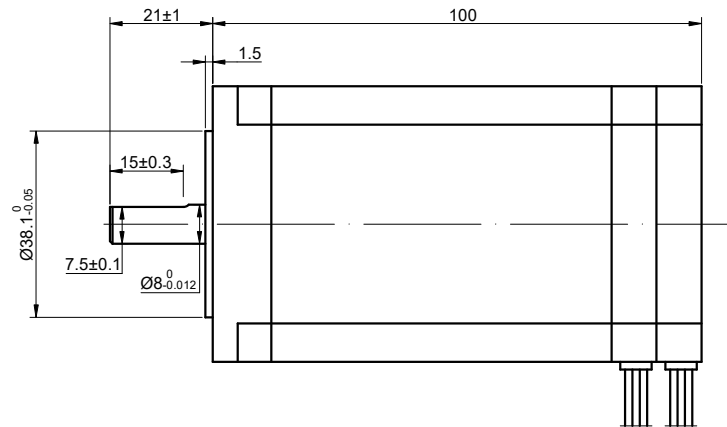
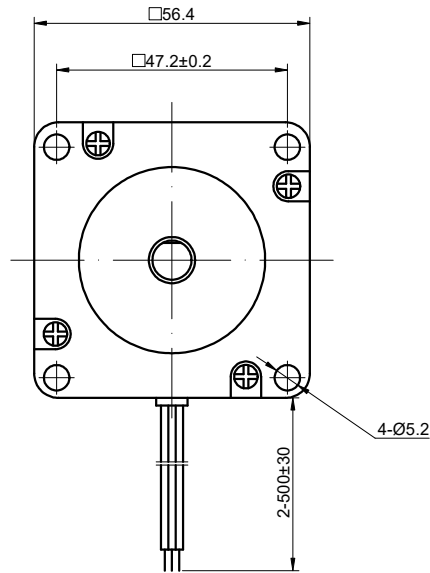


CUSTOMER'S MODEL: NO MODEL  
 END COVER COLOR: GRAY

| REV. | REVISION RECORD | BY  | DATE      |
|------|-----------------|-----|-----------|
| 0    | ORIGIN          | ZPJ | 5.10.2024 |

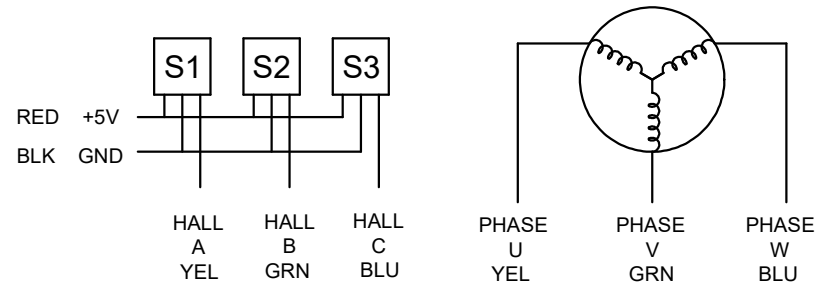


| SPECIFICATION               | VALUE                  |
|-----------------------------|------------------------|
| NO. of PHASES               | 3                      |
| NO. of POLES                | 8                      |
| RESISTANCE/PHASE(Ohms)@25°C | 0.46±10%               |
| INDUCTANCE/PHASE(mH)@1KHz   | 0.42±20%               |
| RATED VOLTAGE(V)            | 36                     |
| RATED TORQUE(N.m)[lb-in]    | 0.60[5.31]             |
| RATED POWER(W)              | 188                    |
| RATED SPEED(RPM)            | 3000±10%               |
| RATED CURRENT(A)            | 7.20                   |
| NO LOAD SPEED(RPM)          | 3650±10%               |
| WEIGHT(kg)                  | 1.30                   |
| BACK EMF(V/krpm)            | 7.03±5%                |
| SENSOR                      | HALL                   |
| AMBIENT TEMPERATURE         | -10°C~50°C[14°F~122°F] |
| INSULATION CLASS            | B 130°C[266°F]         |
| TEMPERATURE RISE            | MAX.80°C               |

COMMENT:  
 1.INSULATION RESISTANCE (NORMAL TEMPERATURE AND HUMIDITY): 50 Mohm  
 2.DIELECTRIC STRENGTH: AC600V CUT OFF CURRENT 2mA FOR 1S

DIMENSIONS ARE IN MILLIMETERS.  
 TOLERANCES AS BELOW:  
 DECIMALS ANGLES  
 X ±0.5 ±2°  
 X.X ±0.25  
 X.XX ±0.13

THIRD ANGLE PROJECTION



HALL LEAD: UL 1007 AWG 24

PHASE LEAD: UL3266 AWG 18

**STEPPERONLINE®**

**BRUSHLESS DC MOTOR**

57BSA100-36-01

THIS DOCUMENT SHALL NOT BE REPRODUCED NOR SHALL THE INFORMATION CONTAINED HEREIN BE USED BY OR DISCLOSED TO OTHERS UNLESS EXPRESSLY AUTHORIZED IN BY WRITING STEPPERONLINE.

| SIGNATURE |     | DATE      |
|-----------|-----|-----------|
| DRN       | ZPJ | 5.10.2024 |
| APVD      | HW  | 5.10.2024 |

|      |   |       |     |         |       |
|------|---|-------|-----|---------|-------|
| REV. | 0 | SCALE | 1:1 | DWG NO. | A3139 |
|------|---|-------|-----|---------|-------|