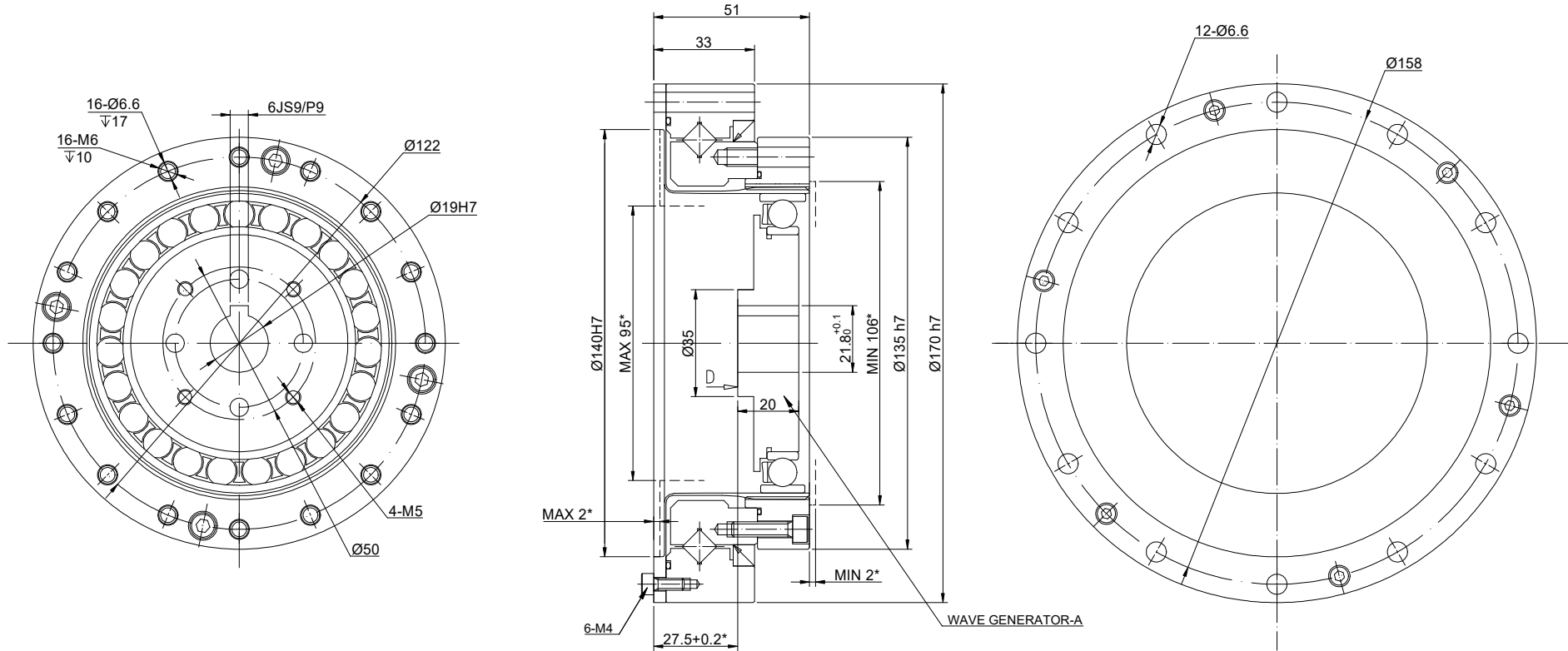


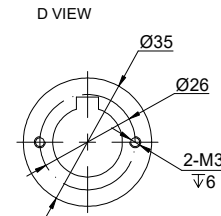
REV.	REVISION RECORD	BY	DATE
0	ORIGIN	HW	6.7.2024



SPECIFICATION	CONNECTION	VALUE
GEAR RATIO		50
BACKLASH@NO-LOAD(arcsec)		<=20
RATED TORQUE(INPUT SPEED 2000RPM)(Nm)[lb-in]		137.00[1212.55]
MOMENT PERMISSIBLE TORQUE(Nm)[lb-in]		686.00[6071.61]
PEAK START-STOP TORQUE(Nm)[lb-in]		402.00[3558.00]
MAXIMUM INPUT SPEED ALLOWED(RPM)		4000
AVERAGE INPUT SPEED ALLOWED(RPM)		3000
WEIGHT(kg)		4.40
LIFE(h)		10000
AMBIENT TEMPERATURE		0°C~40°C[32°F~104°F]

DIMENSIONS ARE IN MILLIMETERS.
TOLERANCES AS BELOW:
DECIMALS ANGLES
X ±0.5 ±2°
X.X ±0.25
X.XX ±0.13

THIRD ANGLE PROJECTION	
SIGNATURE	DATE
DRN	HW
APVD	LDJ



STEPPERONLINE®									
HARMONIC REDUCER									
HHT-40-50-I-D19									
REV.	0	SCALE	2:3	DWG NO.	A3359	DATE	6.12.2024	SIGNATURE	LDJ