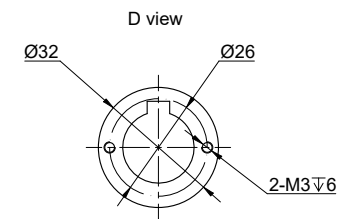
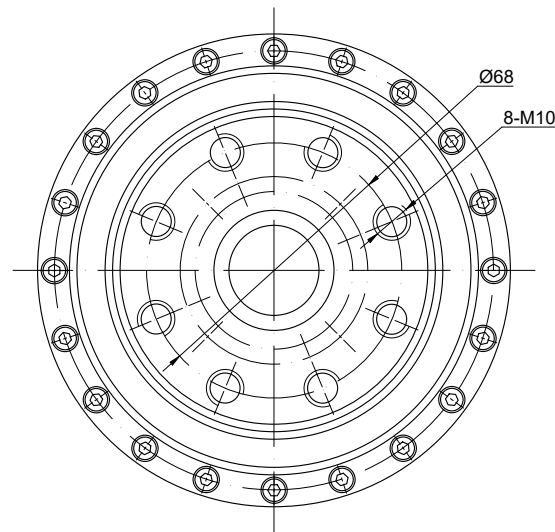
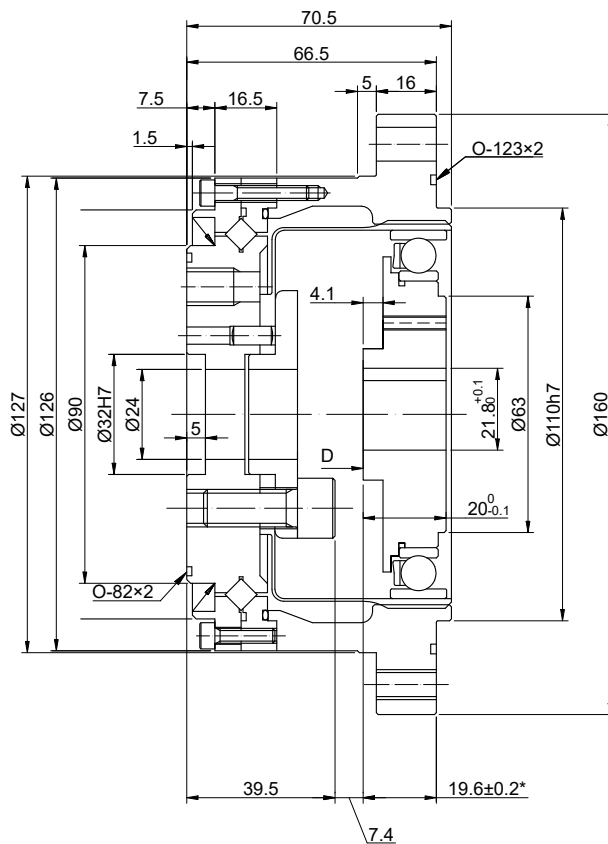
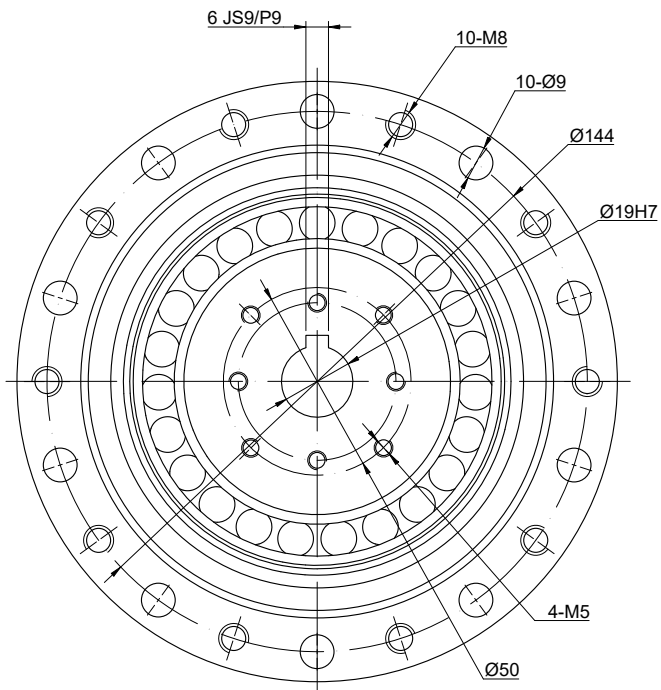


REV.	REVISION RECORD	BY	DATE
0	ORIGIN	LDJ	12.22.2025



SPECIFICATION	CONNECTION	VALUE
GEAR RATIO		50
BACKLASH@NO-LOAD(arcsec)		<=20
RATED TORQUE(INPUT SPEED 2000RPM)(Nm)[lb-in]		137.00[1212.55]
MOMENT PERMISSIBLE TORQUE(Nm)[lb-in]		686.00[6071.61]
PEAK START-STOP TORQUE(Nm)[lb-in]		402.00[3558.00]
MAXIMUM INPUT SPEED ALLOWED(RPM)		4000
AVERAGE INPUT SPEED ALLOWED(RPM)		3000
WEIGHT(kg)		4.60
LIFE(h)		10000
AMBIENT TEMPERATURE		0°C~40°C[32°F~104°F]

DIMENSIONS ARE IN MILLIMETERS.
TOLERANCES AS BELOW:

DECIMALS	ANGLES
X ±0.5	±2°
X.X ±0.25	
X.XX ±0.13	

THIRD ANGLE PROJECTION		
SIGNATURE		DATE
DRN	LDJ	12.23.2025
APVD	ZPJ	12.23.2025

STEPPERONLINE®

HARMONIC REDUCER

HSS-40-50-I-D19

REV.	0	SCALE	2:3	DWG NO.	A3335
------	---	-------	-----	---------	-------